

# #Castlecraftchallenge

## Create your own Castle

Highcliffe Castle has been built and rebuilt many times in its life, with each new owner. Create your own Highcliffe Castle.

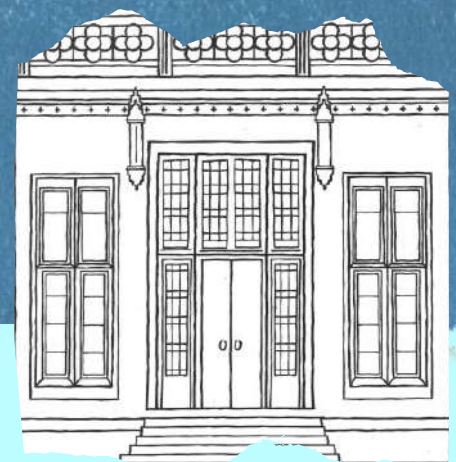


### What you will need:

- Our Highcliffe Castle features templates
- Cardboard boxes of different sizes (you can also use old yoghurt pots)
- Tape and glue - masking tape and PVA are the best for this
- Paint (you could use grey or yellow like the stone of our Castle, or make it multi-coloured!)

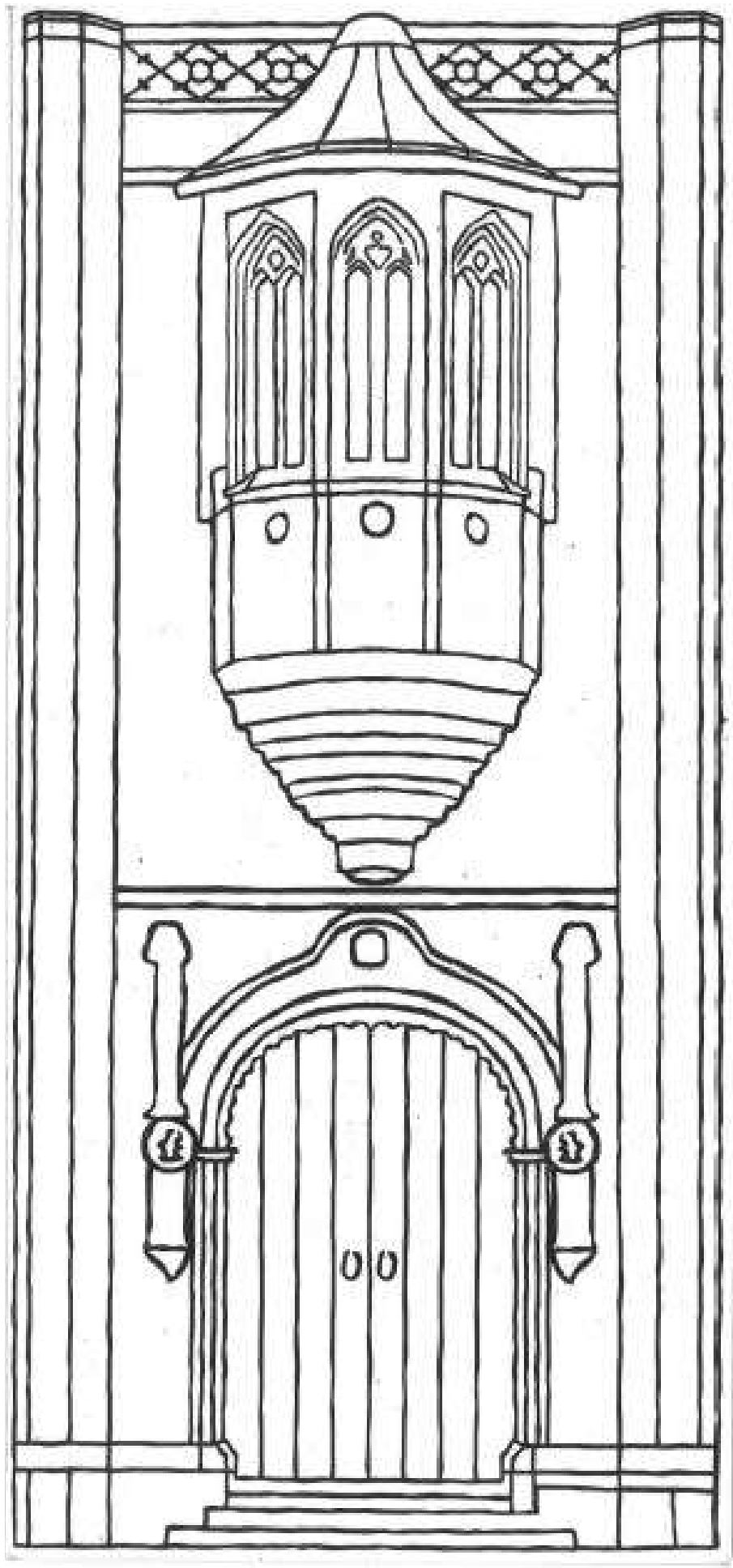
### How to make your castle:

- Arrange your boxes into the shape of the castle, then glue and tape them together
- Paint your castle base
- Print out or trace the templates of our doors and windows
- Colour the castle features and cut out
- Glue your chosen castle features to the boxes

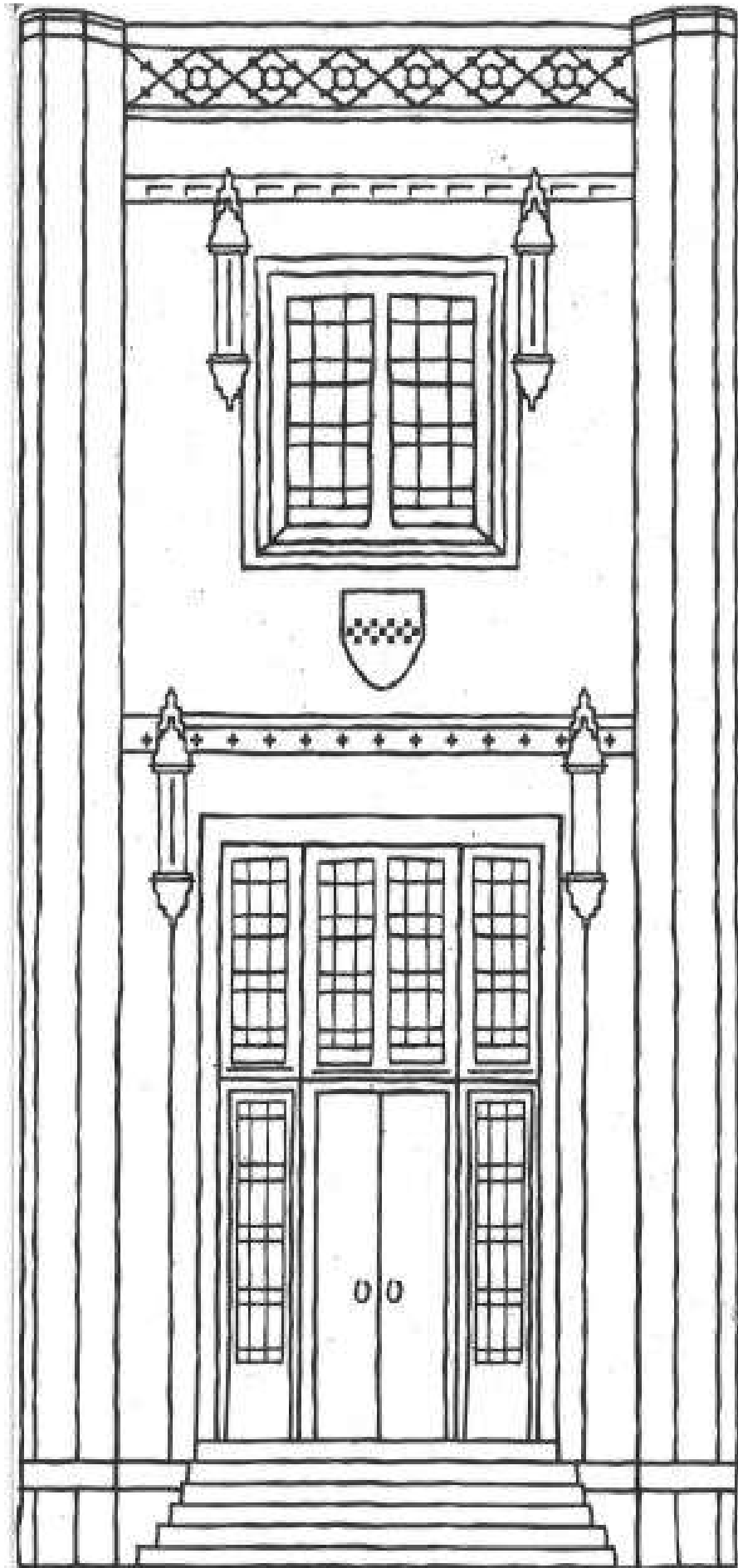


Take a photo and share it with us online using the tag #Castlecraftchallenge

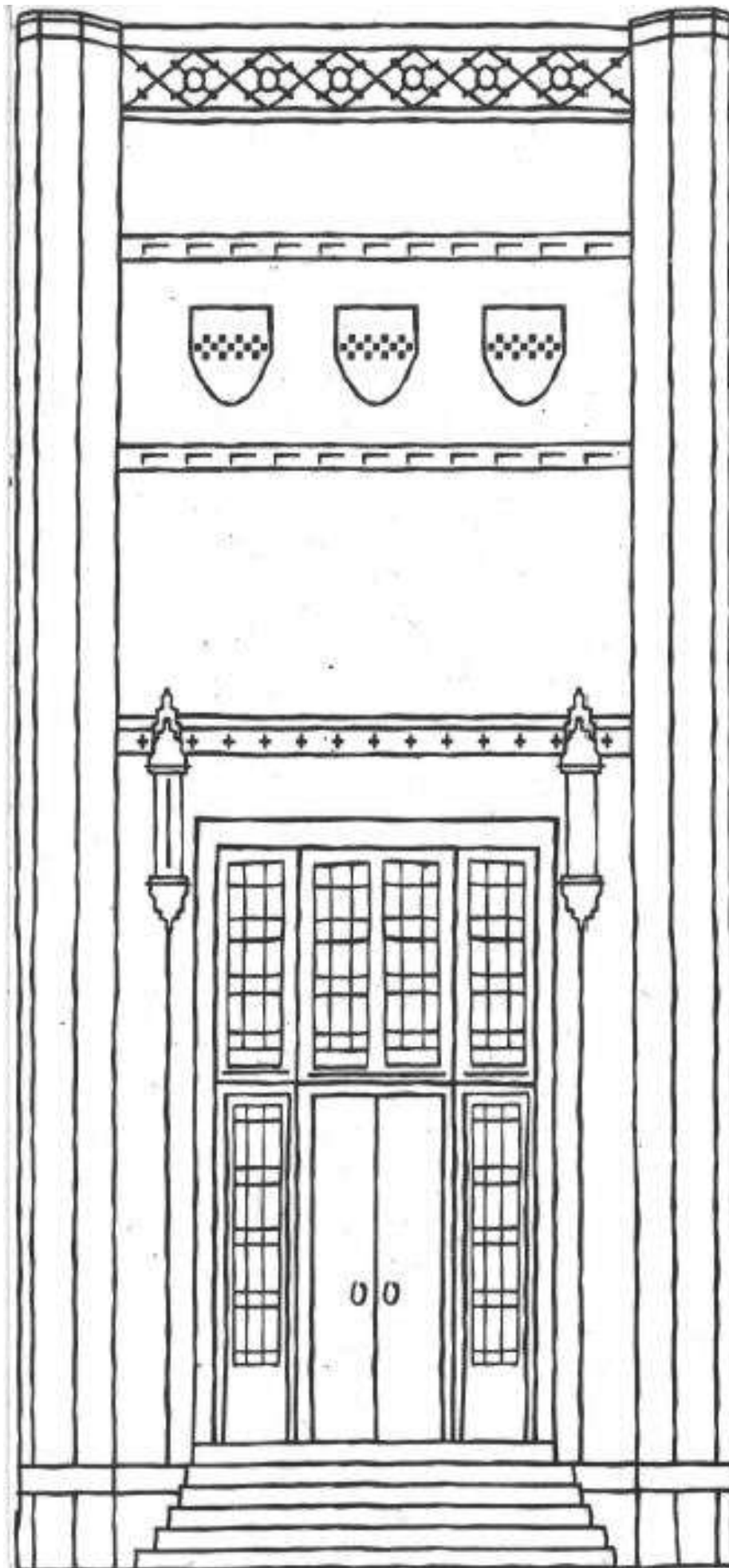
# Highcliffe Castle features



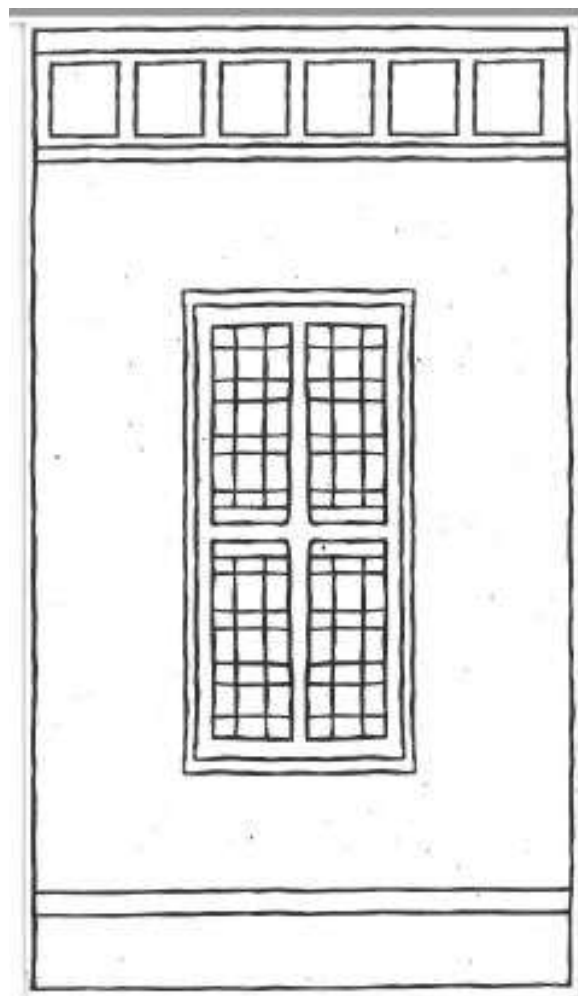
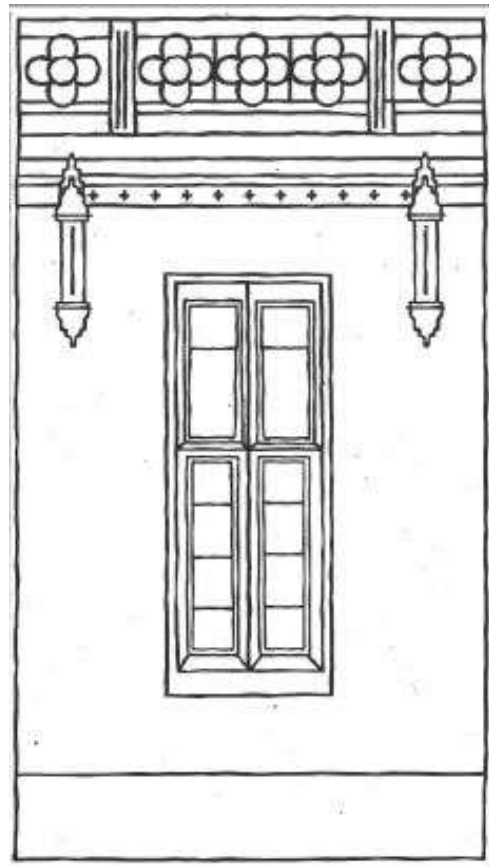
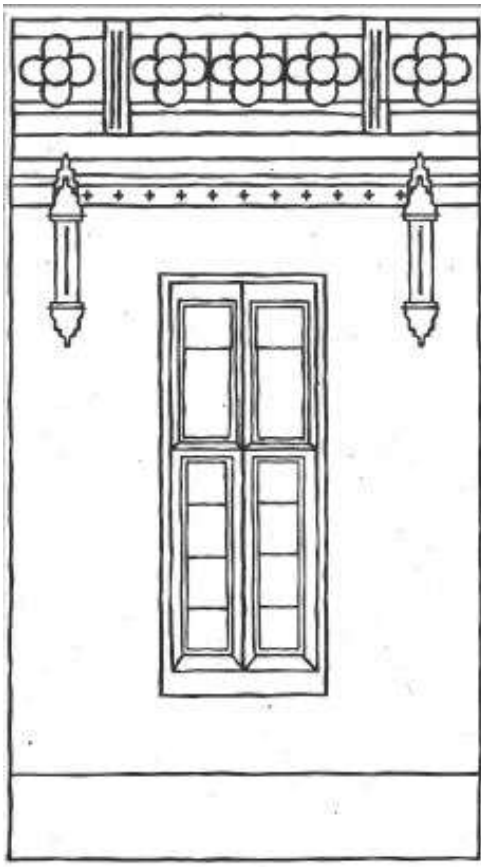
# Highcliffe Castle features



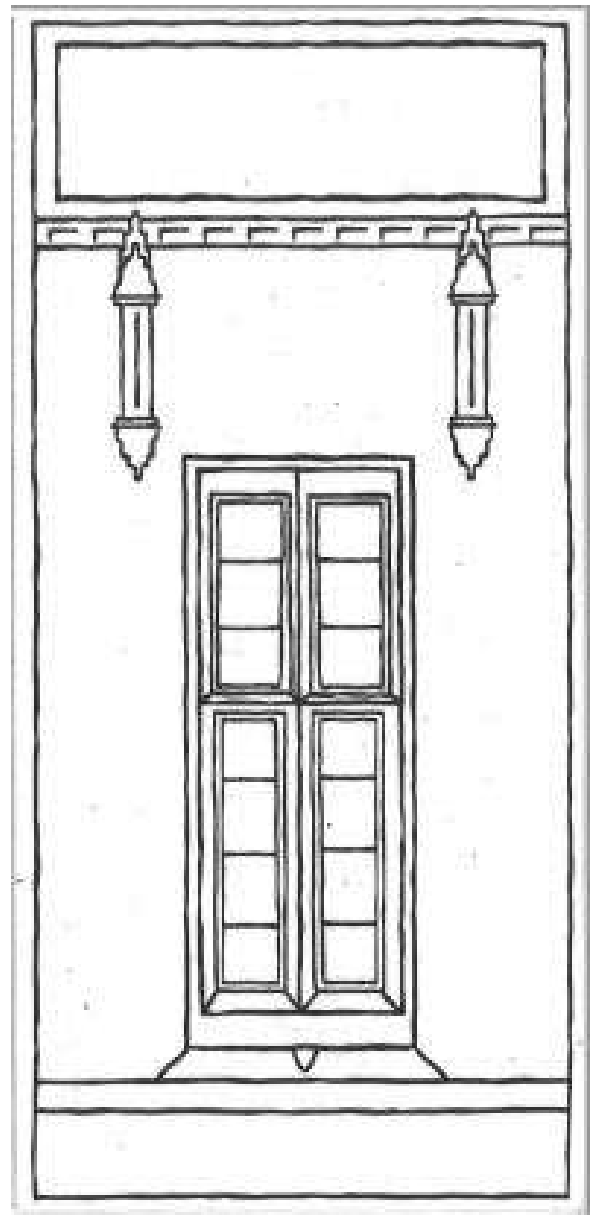
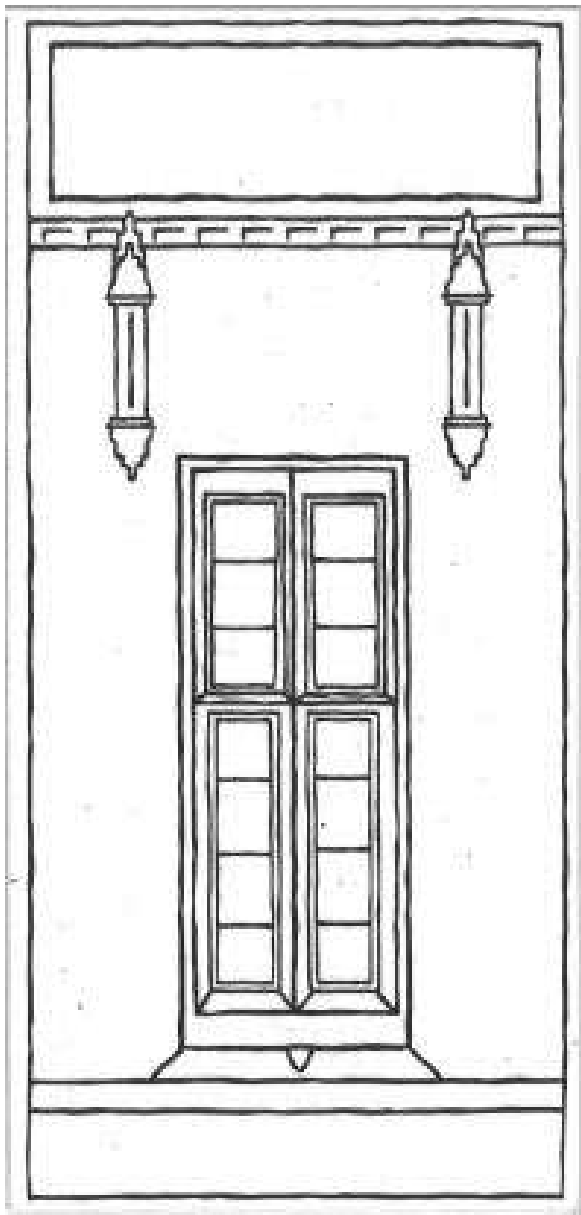
# Highcliffe Castle features



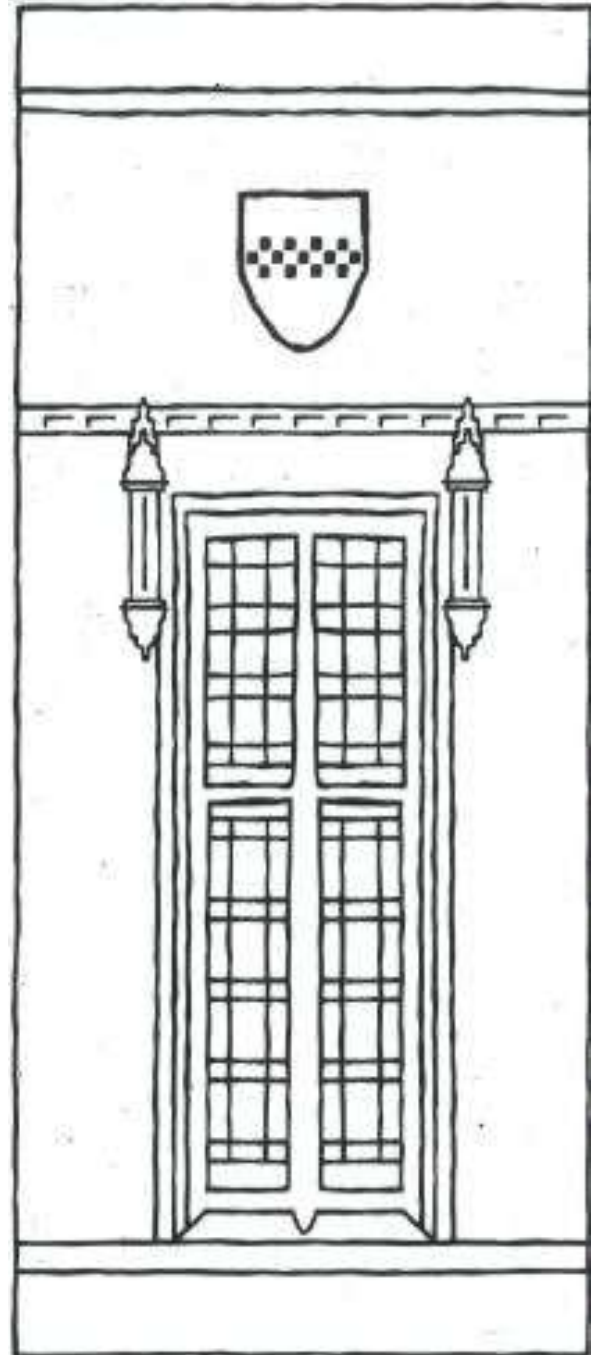
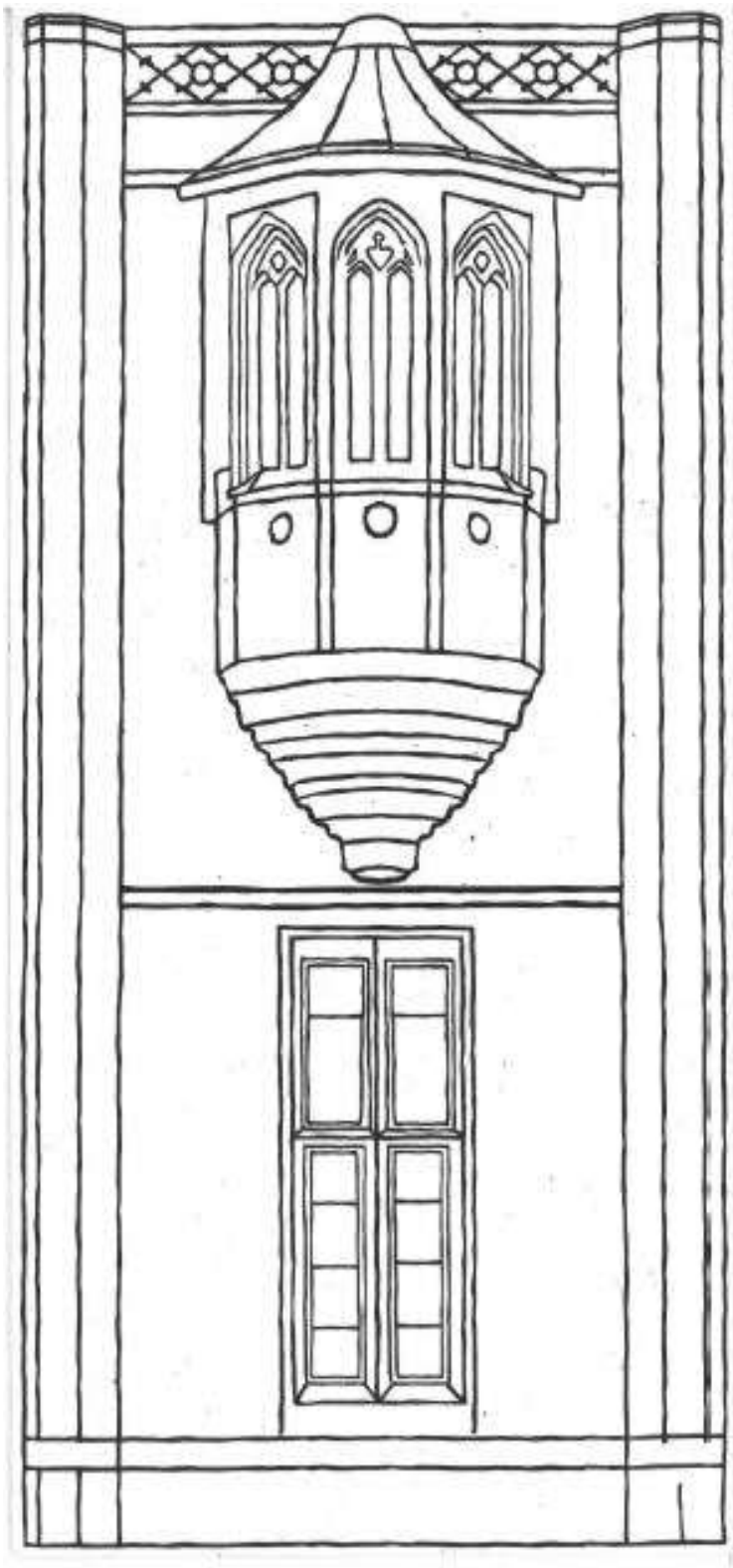
# Highcliffe Castle features



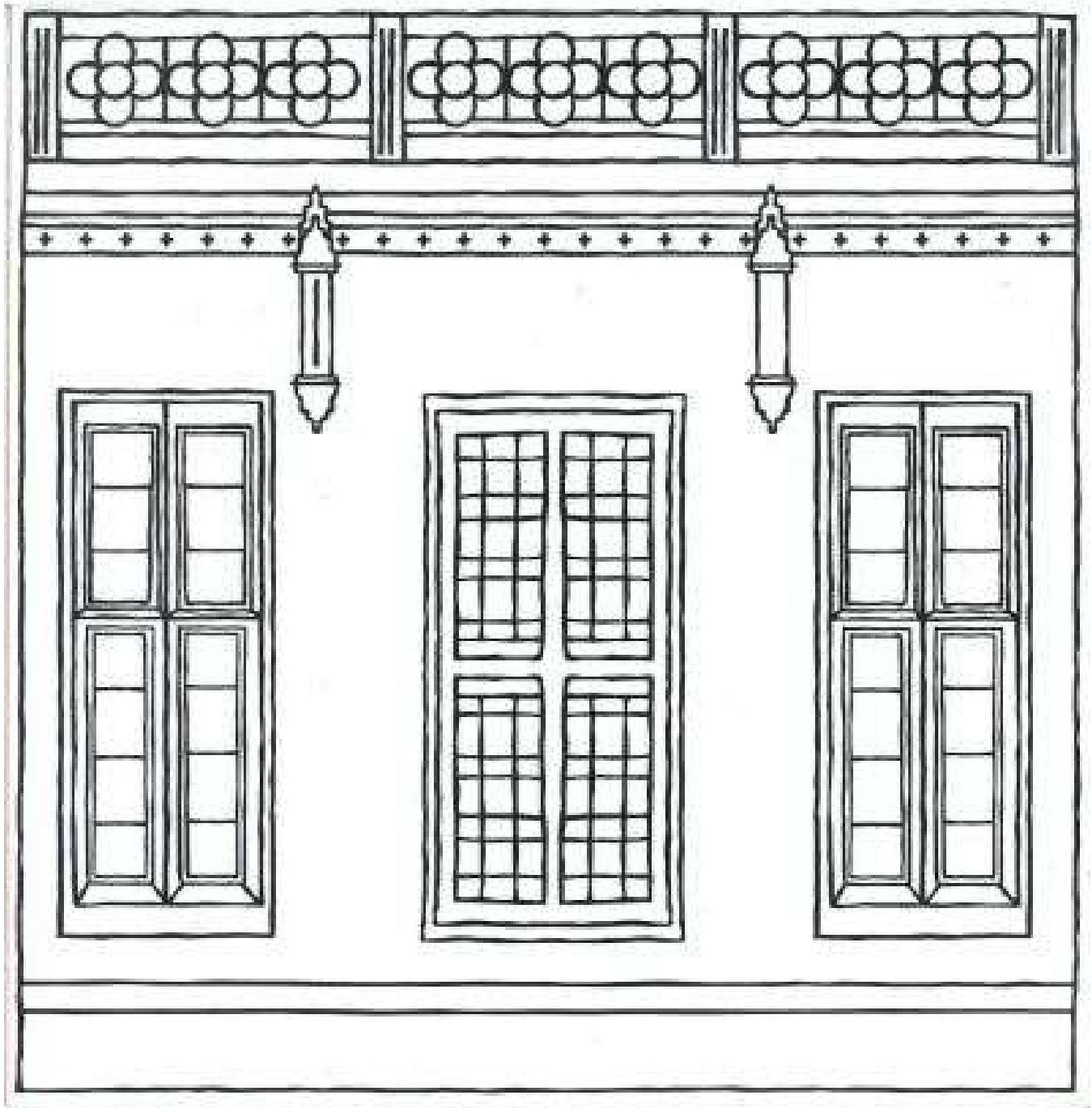
# Highcliffe Castle features



# Highcliffe Castle features



# Highcliffe Castle features





# Highcliffe Castle features

