

# Castle Crafts

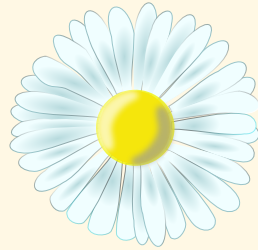
## Nature Mask

### What you'll need

Glue

String

Fallen leaves and petals

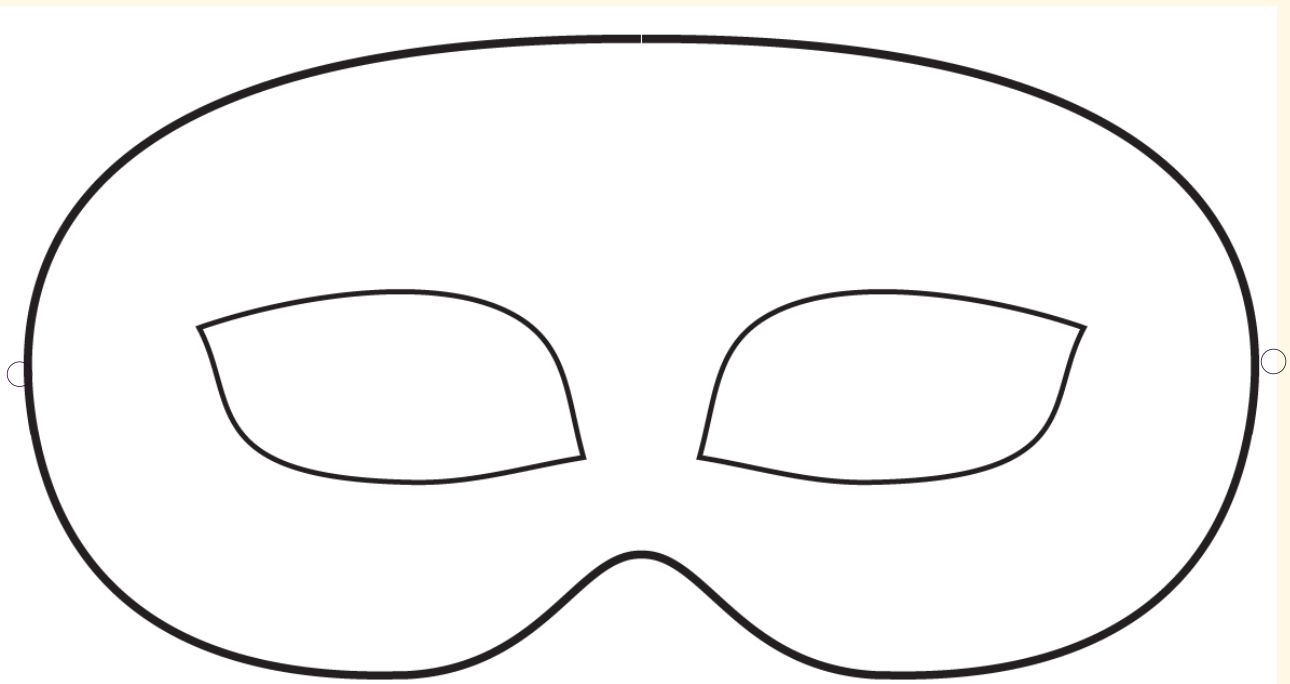


### Making your mask

Cut out the mask, glue it some cardboard and then cut out the mask shape from the cardboard.

Collect leaves and flowers (like daisies, dandelions and buttercups) and glue them to your mask.

Tie string through the holes so that you can wear it.



HIGHCLIFFE  
CASTLE

BCP  
Council

